



Accessibility Statement for Catalent Swindon

Reception.swindon@catalent.com, +44 (0)1793 864000

Contact for accessibility enquiries: Talent Acquisition Team (DisabilityAccommodations@catalent.com) or Human Resources (askswindonhr@catalent.com).



Welcome

The site is accessible for wheelchair users and caters for those with specific access requirements. Please contact the Talent Acquisition Team or Human Resources departments using the information above if you require any further information about specific access or need advice on planning your visit.

At a Glance

Level Access

- There is level access from the main entrance to:
 - Reception area.
 - Accessible unisex toilet.
 - Ground floor meeting rooms.
 - First-floor meeting rooms, accessible via lifts.
 - Laboratories.
 - Production facility (via an accessible changing area).

Hearing

- Mobile hearing loops are available in reception areas.

Visual

- Some glass doors and full-height windows have contrast markings.
- Lighting is provided by a mixture of fluorescent and LED sources.
- Documents are available in large print.
- Braille signs are displayed outside of meeting rooms.

Getting here

Catalent Pharma Solutions
Frankland Road
Swindon
United Kingdom
SN5 8RU

Travel by public transport

- Catalent Swindon can be accessed by bus or a combination of bus and train.
- The nearest bus stop is on the A3102 just before the Blagrove roundabout. The bus stop is 0.3 miles / 0.5 km from Catalent.
- Bus number 55 (stagecoachbus.com) stops at this bus stop.
- The nearest train station is Swindon Station. The train station is 3.3 miles / 5.3 km from Catalent.

Travel by taxi

- Taxis are available from any of the following companies, who advertise wheelchair-accessible vehicles. Please confirm with the company when making a booking
 - 1st Call Swindon Taxis, +44 (0)1793 205121
 - Safe Taxis Swindon, +44 (0)1793 979277
 - M4 Swindon Taxis, +44 (0)1793 205800
 - The Virtual Taxi, +44 (0)1793 297201
 - Veezu Taxis, +44(0)1793 701701

Travel by Air

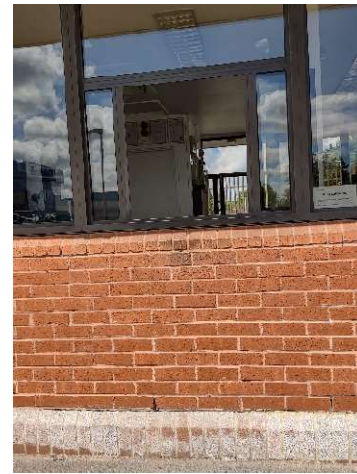
- The nearest airports to Catalent Swindon are below:
 - Bristol Airport, 59 miles / 95 km
 - London Heathrow, 68 miles / 109 km
 - London Gatwick, 105 miles / 169 km
 - London Stansted, 126 miles / 203 km

Arrival by Car

- Visitor parking is provided adjacent to the gatehouse, where you will need to sign in.
- Dropped kerbs are provided to access the pathway to the gatehouse.
- The gatehouse has a personnel window to sign in. The bottom of the window is 1,240mm from the ground.
- A canopy is provided above the gatehouse window.
- If it is easier to remain in your car, please park in one of the spaces provided and signal to a member of the security team with your blue badge, and they will come to you.
- Upon arrival you will be directed to either the East or West wing. The information below describes the site access for each.



Entrance to the site with the gatehouse



The gatehouse window is 1240mm from the ground

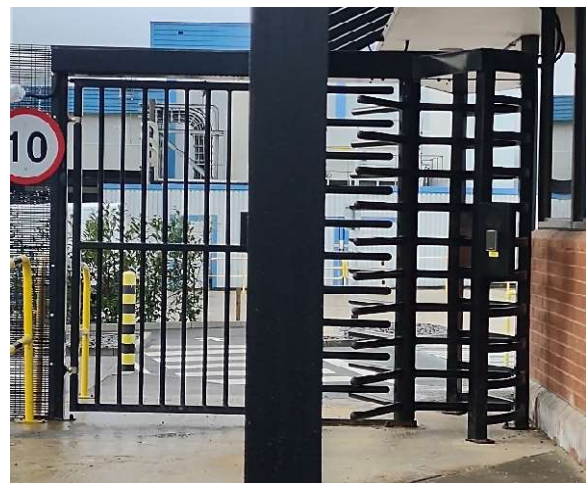
Pedestrian Arrival

Path to main entrance

- There is level access from the street to the gatehouse.
- The path is level and at least 1,570mm wide.
- A canopy is provided above the gatehouse window.
- To access the site, you will need to pass through a security gate (1,290mm wide) or turnstile.
- The turnstile is activated using the visitor pass that will be given to you by the gatehouse security team.
- The security gate is accessed using a code, which will be given to you by the gatehouse security team.
- The security gate is heavy and has a strong closure mechanism, so assistance maybe required from the security team to open it.
- Upon arrival you will be directed to either the East or West wing. The information below describes the site access for each.



Entrance to the site with the gatehouse



Security gate and turnstile

East Wing – Arrival by Car

- Once you have signed in, you will need to move your car to the visitor or disabled parking spaces outside the East Wing reception.
- There are 4 disabled parking bays to the left of reception. The disabled parking bays measure 2.5m x 4.7m. There is 1.35m of space adjacent to each parking bay and 2.15m at the rear.
- There are 20 visitor bays opposite and to the left of reception, each measuring 2.5m x 4.7m.



East Wing Disabled parking bays



East Wing Visitor parking bays



East Wing Visitor parking bays



East Wing Visitor parking bays

East Wing – Pedestrian Arrival

- There is a zebra crossing and a walkway to access the reception area.
- Part of the walkway goes onto a speedbump which is 120mm high.
- There are drain covers along this walkway.



Zebra crossing towards East Wing reception



Pathway towards East Wing reception



Drain covers in pathway towards East Wing reception



Speedbump in pathway towards East Wing reception (120mm high)

East Wing – Main entrance

- The main entrance has level access.
- There are double doors to access the reception lobby, each door is 750mm wide. The doors pull outward.
- Inside the lobby there is a card reader, which unlocks the door. The card reader is 1,550mm from the floor.
- There are double doors to access reception, each door is 800mm wide. The doors pull outward.
- The flooring in the lobby is a short-pile carpet with a short-pile mat inside the building.



Entrance to East Wing lobby
(each door is 750mm wide)



Card reader to access East Wing
reception (1550mm from floor)



Entrance to East Wing reception
(each door is 800mm wide)

East Wing – Getting around inside.

East Wing Reception Area

- We have contrast markings on some glass doors, and color contrast between walls and doorframes.
- Lighting is provided by a mixture of fluorescent and LED sources.
- The flooring is a mixture of short-pile carpet and tiling.
- There are stairs to the first floor.
- Access to production areas is via a first floor changing area that requires people to use a step-over, or via an accessible changing area on the ground floor.



East Wing Reception desk



East Wing Reception seating area



East Wing Reception seating area with
stairs to first floor

East Wing – Ground Floor Accessible Toilet

- There is an accessible unisex toilet in the reception area.
- The door to the toilet is 800mm wide and opens outwards.
- The toilet seat is 460mm high with a back rest.
- The sink is 740mm high.
- There are grab rails fitted in the toilet.
- An alarm cord is provided.
- The floor is tiled.



East Wing Accessible toilet door (800mm wide)



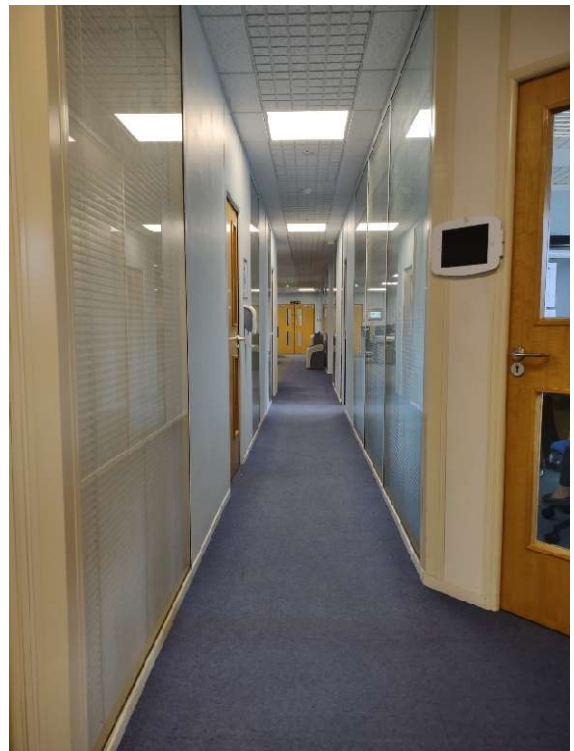
East Wing Ground floor accessible toilet interior

East Wing Ground Floor Meeting Room (*Brunel*)

- The *Brunel* meeting room is accessed through the laboratory write up area and along a corridor. The flooring is short pile carpet.
- The door to the laboratory write-up area is 770mm wide with a card reader 1,370mm from the floor.
- The corridor through the laboratory write-up area is 1,030mm wide.
- At the end of the laboratory write up area there is a double door (each door is 770mm wide).
- The corridor leading to the Brunel meeting room is 1,760mm wide and has short pile carpet and vinyl flooring.



Door to the East Wing laboratory write-up area (770mm wide with 580mm extension) with card reader (1,370mm from the floor)



Corridor through the East Wing laboratory write-up area (1,030mm wide)



Double doors at the end of the East Wing laboratory write-up area (each door is 770mm wide)



Corridor to the East Wing *Brunel* meeting room (1,760mm wide)



East Wing *Brunel* meeting room
(Door is 810mm wide)



East Wing *Brunel* Meeting room

East Wing – Accessing First Floor Meeting Rooms

- Access to the first floor is via a lift or stairs. Access to the lift is via the laboratory write up area and through a double door and a single door (770mm wide).
- The lift door is 790mm wide and the lift is 1,400mm deep.
- The lift buttons do not have raised numbers, letters or Braille.
- The lift shows the floor number at each floor.
- There is an alarm button in the lift, which is connected to the gatehouse.
- The lighting in the lift is LED and is at a low level. No music is played in the lift.
- The flooring in the lift is vinyl, non-slip material.



Single door to the East Wing lift
(770mm wide with 580mm extension)



East Wing Lift entrance (790mm wide)



East Wing Lift Control
Panel



Top of the East Wing stairwell (where the lift opens).
The doors lead into a foyer. Each door is 780mm wide



The Foyer at the top of the East Wing stairs

- The Foyer leads to the open plan office area and the *Blagroves* restaurant. All doors in this area are double and each is 780mm wide.
- There are two meeting rooms on the first floor, named *Pasteur* and *Scherer*.
- The *Pasteur* and *Scherer* meeting rooms have Braille signs on the doors.
- Access to the *Scherer* meeting room is via the open plan office area:



East Wing open plan office area



Doors towards East Wing *Scherer* meeting room
(Door is 770mm wide with 580mm extension)



Top of the East Wing stairs (from the reception area)



East Wing *Scherer* meeting room
(Each door is 770mm wide)



East Wing *Scherer* meeting room interior

- In the case of an emergency evacuation, an Evacuation chair can be found in the cupboard in the *Scherer* meeting room.
- There is also a refuge point at the top of the stairs with an emergency telephone connected to the gatehouse security team.

- Access to the *Pasteur* meeting room is via the *Blagroves* restaurant and a corridor.
- The *Pasteur* meeting room has a Braille sign on the door.
- *Blagroves* restaurant is accessed by a set of double doors from the foyer at the top of the stairs. Each door swings both ways and is 780mm wide.



Blagroves restaurant (East Wing)



Doors out of the *Blagroves* restaurant (each door is 780mm wide and swings both ways)



Corridor towards the East Wing *Pasteur* meeting room (1600mm wide)



Door to the East Wing *Pasteur* meeting room (Door is 810mm wide with 580mm extension)

East Wing – First Floor Accessible Toilet

- There is an accessible unisex toilet opposite the *Scherer* meeting room.
- The door to the toilet is 840mm wide and opens outwards.
- The toilet seat is 460mm high with a back rest.
- The sink is 750mm high.
- There are grab rails fitted in the toilet
- An alarm cord is provided
- The floor is tiled.



East Wing accessible toilet door (840mm wide)



East Wing first floor accessible toilet interior

West Wing – Arrival by Car

- Once you have signed in, you will need to move your car to the visitor or disabled spaces outside the West Wing reception.
- There are 6 disabled parking bays in front of reception. The disabled parking bays each measure 2.5m x 4.6m. There is 1.35m of space adjacent to each parking bay and 2.15m at the rear.
- There are 8 visitor bays opposite reception. The visitor bays measure 2.5m x 4.7m.
- There is a dropped kerb to allow access to the pathway.
- The reception area is accessed via a card reader, which is required to open the door. The card reader is 1,200mm from the floor and 500mm away from the side of the footpath.



West Wing disabled and visitor parking bays



Pathway to West Wing Reception Entrance



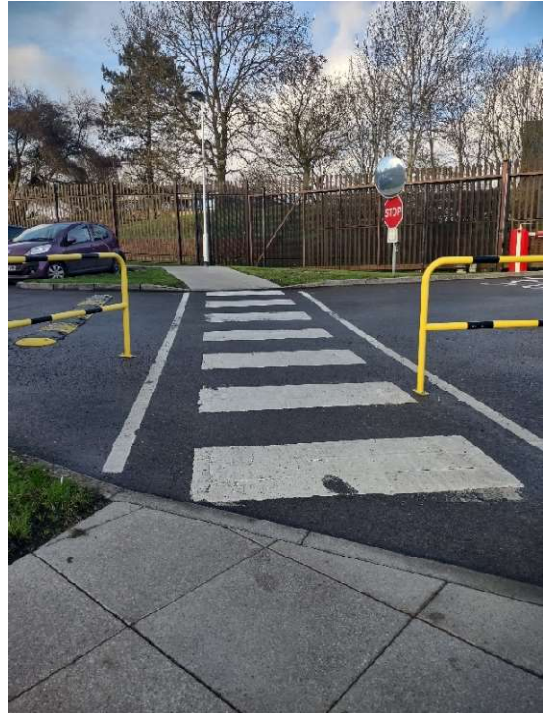
West Wing Reception Entrance. The doors are 900mm wide. The card reader for entry is on the right-hand side

West Wing – Pedestrian Arrival

- There are 3 marked (“zebra”) crossings and a walkway to access the West Wing reception area.



First Zebra crossing towards West Wing reception



Second Zebra crossing towards West Wing reception



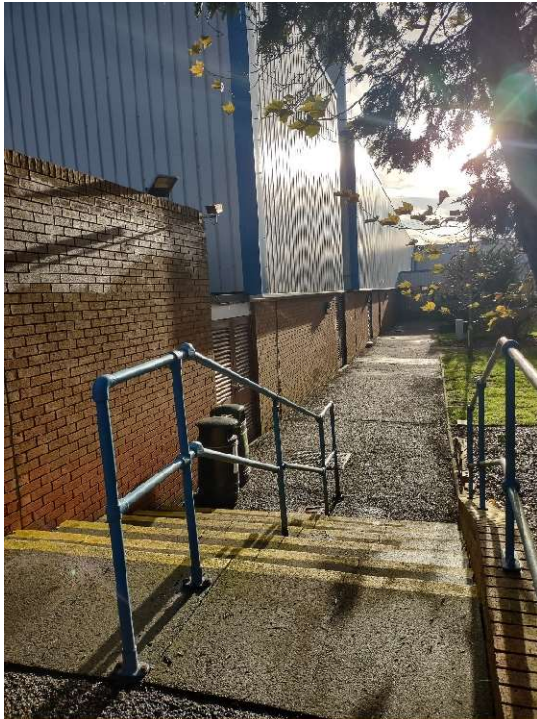
Pathway towards West Wing, 1.8m wide



Third Zebra crossing towards West Wing reception

West Wing – Side Entrance

- The side entrance to the West Wing is via a flight of 6 steps and a door which has one step.



Flight of steps to the West Wing side entrance. There are 6 steps, 510mm deep and 180mm high



West Wing side entrance. The step is 130mm high

West Wing – Main Reception Wheelchair Access

- To access the West Wing reception using a wheelchair (if you are not using a car), you will need to turn right before the steps and follow the road.



Turn right before the steps and follow the road



Follow the road to the left and the West Wing reception area is on the left-hand side at the end of the building



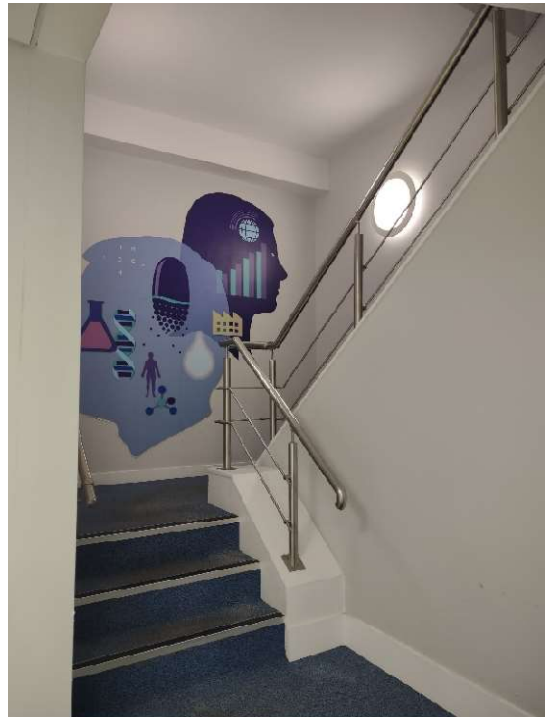
West Wing Reception area



Double doors leading to the West Wing accessible toilet (each door is 770mm wide)



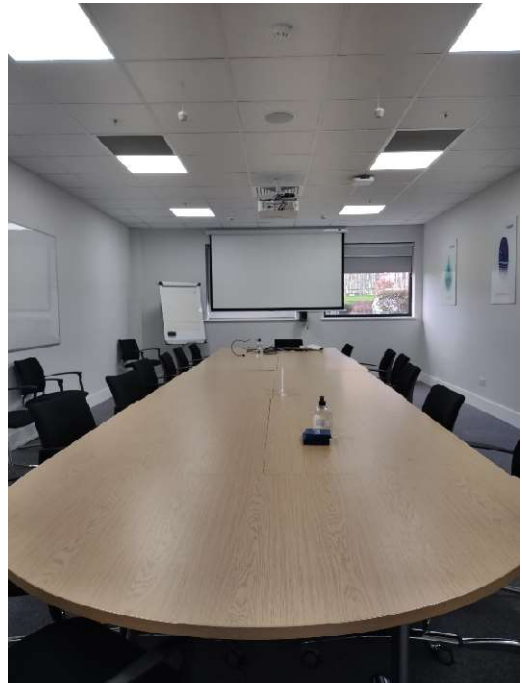
Corridor (2,320mm wide) leading to the West Wing *Nightingale* meeting room and the lift to the first floor



Stairs to West Wing first floor



West Wing *Nightingale* meeting room
(door is 820mm wide with 230mm extension)



West Wing *Nightingale* meeting room

West Wing – Getting around inside.

West Wing Reception Area

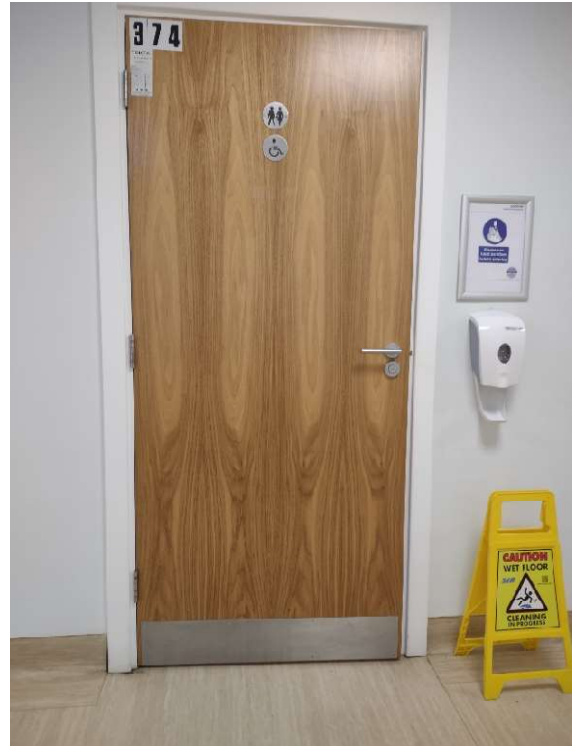
- The reception area is accessed via a card reader, which is required to unlock the door. The card reader is 1,200mm from the floor and 500mm from the footpath.
- We have contrast markings on some glass doors, and color contrast between walls and doorframes.
- Lighting is provided by LEDs.
- The flooring is tiled.
- There are double doors leading to a corridor and an accessible unisex toilet.
- A flight of stairs leads to the first floor.
- A corridor leads to the *Nightingale* meeting room and the lift to the first floor.
- The *Nightingale* meeting room has a Braille sign on the door.

West Wing – Accessible Toilet

- The door to the toilet is 840mm wide and opens outwards.
- The toilet seat is 490mm high.
- The sink is 830mm high.
- There are grab rails fitted in the toilet.
- An alarm cord is provided.
- The floor is tiled.



Double doors leading to the West Wing corridor and accessible toilet (each door is 770mm wide). the card reader on the left hand side is 1,300mm from the floor.



West Wing accessible toilet (Door is 840mm wide)



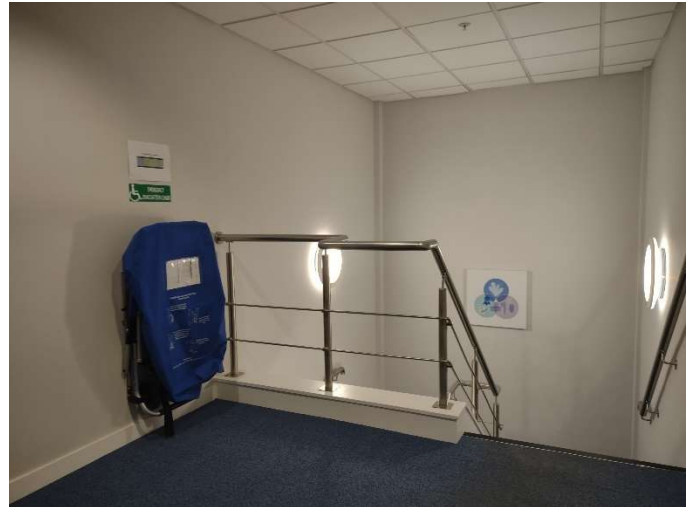
West Wing accessible bathroom.

West Wing First Floor

- West Wing first floor has two meeting rooms, *Stonehenge* and *Tesla*.
- The *Stonehenge* and *Tesla* meeting rooms have Braille signs on the doors.
- The first floor can be accessed via stairs or a lift.
- There are no accessible toilets on the first floor.
- In case of an emergency evacuation, an Evacuation chair is stored at the top of the stairs in the West Wing. There is also a refuge point at the top of these stairs.



Stairs to West Wing first floor



Top of the stairs in West Wing



West Wing *Tesla* meeting room
(door is 780mm wide)



West Wing *Tesla* meeting room



West Wing *Stonehenge* meeting room
(Doors are each 800mm wide)



West Wing *Stonehenge* meeting room

West Wing – Lift

- The lift door is 800mm wide and the lift measures 2,150mm x 1,680mm.
- The lift buttons have raised numbers and Braille markings.
- The number at each floor illuminates and a voice will announce movement and arrival.
- In the list there is an emergency stop button and an emergency telephone connected to the gatehouse security team
- The lighting in the lift is LED. No music is played in the lift.
- The flooring in the lift is vinyl non-slip material.
- On the ground floor, the door lift is manually opened.
- On the first floor the lift door opens automatically.
- The meeting rooms on the first floor are accessed by a set of double doors leading to a corridor.



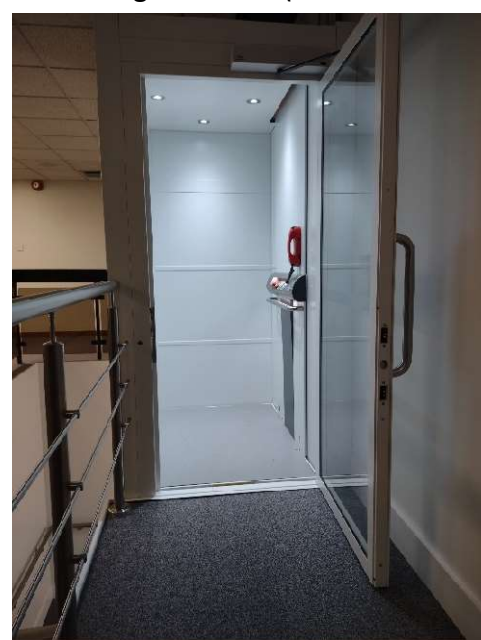
Ground floor West Wing lift entry/exit



Lift to West Wing first floor (Door is 800mm wide)



West Wing Lift interior



First floor West Wing lift entry/exit



Access to the corridor leading to the West Wing meeting rooms. Each door is 800mm wide, the card reader on the left hand side is 1,300mm from the floor



Corridor to the West Wing meeting rooms (1,840mm wide).